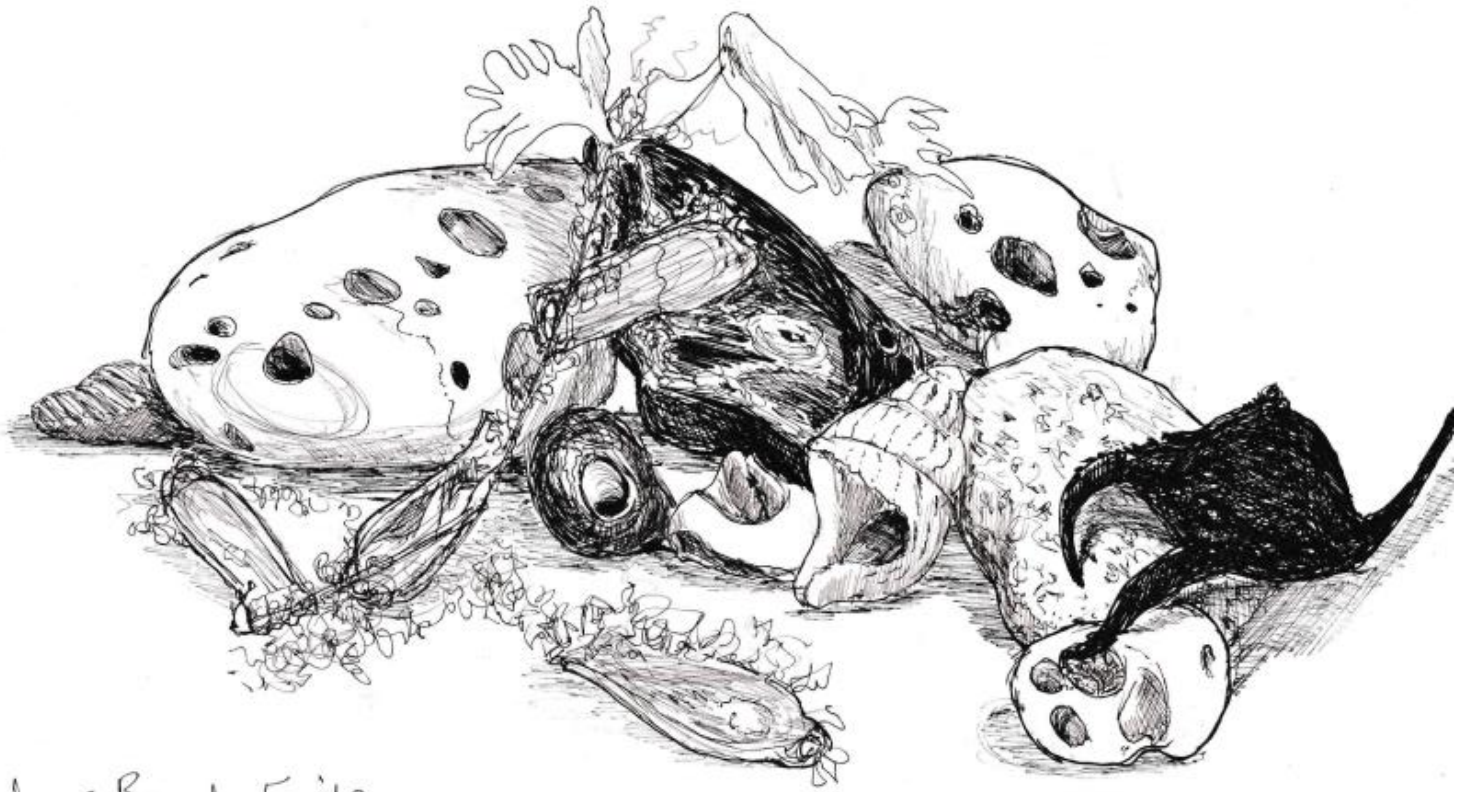


ASH WITH WESTMARSH
PARISH MAGAZINE
APRIL 2024
£1



Walmer Beach Finds
12th Feb 2024

The Canonry Benefice of
Ash – Chillenden – Elmstone – Goodnestone
Nonington – Preston – Stourmouth

Useful Contacts

Service	Organisation/Name	Contact
<u>Emergencies</u> 999	Gas Emergency (24hrs)	0800 111 999
	UK Power Networks (24hrs)	105
	Water Leak Line (24hrs)	0800 820 999
<u>Community</u>	Community Warden, Peter Gill	07703454190
		www.kent.gov.uk/communitywardens
	Non-urgent and other enquiries	101
	Neighbourhood Watch	Martin Porter - email porter118@btinternet.com
	Crime Stoppers	0800 555111
	Community Safety Dover	01304 872220
	Consumer Direct	01845 4040506
	Childline	0800 1111
	Kent County Council	08458 247247
	Dover District Council	01304 821199
	Craig Mackinlay MP	01843 589266
	Ash Parish Council	07398 584 053
	Citizens Advice (Dover area)	0844 8487978
	Ash Village Hall Enquiries	01304 369314
	Environmental Health	01304 872215
Trading Standards	0845 4040506	
Ash Library	01304 812440	
<u>Healthcare</u>	NHS Medical Helpline (24hrs)	111 or www.nhs.uk
	Out of Hours Doctor Service	0844 8001234
	Ash Surgery	01304 812227
	Hospitals - Kent and Canterbury	01227 766877
	QEQM Margate	01843 225544
	William Harvey	01233 633331
Pharmacy - Ash (Boots)	01304 812242	
<u>Education</u>	KCC Area Office	03000 414141
	Cartwright and Kelsey School	01304 812539
	St Faith's Prep School	01304 813409
	Sandwich Technology College	01304 610000
	Sir Roger Manwood School	01304 613286
<u>Transport</u>	National Rail TrainTracker™	0871 2004950
	Stagecoach East Kent Ltd	0845 6002299

**Times can be tough. There's always someone you can talk to 24/7.
The Samaritans: call 116 123 or visit samaritans.org**

~ If an error is noted please inform the editors ~

Welcome to the April magazine

Inside this issue

What's On	4
Church Notices	5
Onlooker	7
Asian Hornet Sighting	9
Volunteers Clean Sweep	11
Clubs & Societies News	15
Readers' Letters	26
Food Stories	27
Cover Story	31
Garden Jottings	33
From the Archives	35

Contacts

Clergy

Rev Nigel Hale
01304 813161

Churchwarden

Jacqueline Wilkinson

ash_chwarden@thecanonybenefice.org.uk

Benefice Administration

Beth Barber

admin@thecanonybenefice.org.uk

This magazine is produced by St. Nicholas Parish Church. We welcome items from individuals and local organisations. All items should come with a note of the contributor's name. The editor reserves the right both to edit and not to publish anything she receives. Items on church matters do not represent the official position of the Church of England.

Magazine Subscription

Never miss an edition of your favourite parish magazine!
To arrange a subscription including magazine delivery to your door (within the parish) phone Rebecca on 07443 605873 or email rebeccasmith.ash@gmail.com

Share Your News

Email copy for the next magazine edition by **Thursday 18th April** to rebeccasmith.ash@gmail.com or post hard copy at 69, The Street, Ash.

ADVERTISE IN THE PARISH MAGAZINE
Reasonable rates and a loyal readership
Send advertising enquiries to
ashpm.ads@gmail.com

Front cover illustration
Beachcombing. By Pat Coles.

What's On

A HAPPY HOUR at Elmstone Church will be held on Friday 5th April from 6.30pm. For more Elmstone news, see page 24.

THE GOOD COMPANIONS meet on 2nd and 16th of April in the Village Hall Library, Ash, between 2-4pm for games, companionship, and fun.

JOIN THE NHS Health Walk and Talk on Thursday 4th April leaving at 10am in the Chequer Inn car park.

THE COMMUNITY COFFEE MORNING at Ash Village Hall on Saturday 6th April from 10am-noon will raise money for Christian Aid. Poster page 16.

ASH BOWLING CLUB host at Sunday 7th April: Ladies' Coffee morning 10am-noon at the club. For more events and information see page 15.

THE CHURCHYARD BASH is on Saturday 13th April from 9am-noon at St Nicholas Church, Ash. Join volunteers to maintain the parish church grounds.

ASH WI meet on Thursday 11th April at Ash Village Hall from 2.30-4.30pm. See poster page 14 for details.

ASH HORTICULTURAL SOCIETY Spring Show is on Saturday 20th April. For details and open classes entry see pages 17&18. Members meet on Thursday 25th April for a talk by Colin Moat, "In Praise of Higher Things". Ash Village Hall, 7.30pm. Entry £2.

ASH LAWN TENNIS CLUB is holding an open session for anyone interested in trying Pickleball. Saturday 20th April. 10am-noon. Ash Recreation Ground See page 15 for more information.

What's on every week...

- **NONINGTON COFFEE STOP** is on Thursdays 10am-3pm at the Baptist Chapel.
- **ASH TODDLER GROUP** meet on Mondays in Ash Village Hall from 10am-11.30am in term times.
- **MEET UP MONDAYS** at The Chequer Inn, Ash, from 10am to midday. Entrance through to rear double doors. Tea, coffee and chat.
- **ASH HERITAGE CENTRE** opens Saturday mornings 10am-12noon and is home to a wide range of local historical items and records.
- **GOODNESTONE CHURCH POST OFFICE AND COFFEE MORNINGS.** Mondays and Fridays 10am-noon.

Church Services for April

Sunday 7th April

Holy Communion, 9am, Holy Cross, Goodnestone; Holy Communion 10am, Elmstone Church; Morning Worship, 10.30am, St Nicholas, Ash followed by the Annual Parochial Church Meeting; Holy Communion, 10.30am, St Mary's, Nonington.

Sunday 14th April

Holy Communion, 9am, All Saints, Chillenden; Holy Communion, 10.30, St. Nicholas, Ash; Family Service, 10.30am, St Mildred's, Preston; Breakfast Church 9.30am, St. Mary's, Nonington.

Sunday 21st April

Holy Communion, 9am, Holy Cross, Goodnestone; Holy Communion, 10am, Elmstone Church; Holy Communion, 10.30am, St Nicholas, Ash; Morning Worship, 10.30am, Baptist Chapel, Nonington.

Sunday 28th April

Holy Communion, 9am, All Saints, Chillenden; Holy Communion, 10.30am, St Nicholas, Ash; Holy Communion, 10am, Baptist Chapel Nonington.

Information on services and events is correct at time of going to print – please check www.thecanonrybenefice.org.uk for updates or our Facebook page www.facebook.com/thecanonrybenefice
The weekly news sheet is uploaded at our website which has information about all the churches in the Benefice www.thecanonrybenefice.org.uk

Private Prayer

Churches are open at the following times:

St Nicholas, Ash	All week 9.30am to 3pm
Holy Cross, Goodnestone	All week in daylight hours
St Mary's Nonington	All week in daylight hours
All Saints, Chillenden	Weekends 10am-5pm

Other churches can be unlocked upon request.

Please note services may be taking place during this time.

Check noticeboards for closures during booked events.



ASH SUMMER PICNIC

SATURDAY 13TH JULY

Calling all crafters and sewing enthusiasts!

Join us in creating beautiful bunting for our summer event. Whether you are a seasoned sewer or crafting novice, your skills are needed to make our event festive and vibrant. Come together with fellow creatives and contribute to the community spirit.

Calling all Ash small local businesses

Join the Ash Summer Picnic to showcase your products and services.
Connect with your community at our upcoming event.

Contact the Ash Parish Council Clerk by 19th April for more information on how to participate.

Organised by Ash Parish Council. For more information please email: clerk@ashparishcouncil.gov.uk



Onlooker

A councillor's view of the Ash Parish council meetings held on Monday 4th March 2024.

Monthly meetings take place at Cartwright and Kelsey School and members of the public are welcome to attend. This month's meeting covered a range of topics brief notes of which follow.

Councillor Sue Chandler representing KCC confirmed that there would be a Council Tax increase of 5% (£1.47 per week for a Band D property). The major spend for KCC is on adult social care and a public consultation regarding this has been planned.

KCC have been working with Kent Wildlife Trust to create a Net Gain Site Register. From 12th February building developments of ten or more units need to be able to demonstrate a 10% increase in biodiversity and a system of 'buying credits' means this will not necessarily be in the same area.

There will be major reconstruction work on the A299 between Whitstable and the Chestfield Tunnel from April. A Councillor raised the issue of the number of road closures in our area some of which are due to potholes where a continuous strip needs repair hence a longer road closure.

There is a Spring 2024 Newsletter on the DDC website and District Councillors Trevor Bartlett and Martin Porter had also provided a report. There was specific mention of the Electronic Entry System which comes into force from 6th October and is likely to cause delays at Dover Port due to the need for travellers to go through an initial registration (thereafter renewed every three years).

Two of our parishioners attended for public consultation time expressing concerns around vandalism, anti-social and nuisance behaviour, including foul language. Councillors are aware and in regular contact with our Neighbourhood Beat Officer (PC Jon Bowler). The matter is in the hands of the police and residents are urged to continue to report incidents to the police as and when they occur.

Vandalism has also impacted on the Parish Council's need to decide on whether we should continue to maintain the recreation ground toilets

since repairs are costly and replacing wooden doors with steel would run into thousands of pounds.

Other village matters included an update on the allotments which have been cleared and are looking very tidy. Some plots will be re-mapped before allocation to new members.

The Ash Wildlife Friendly Village group organised a very successful day conference and there will be opportunities for follow-up and active involvement.

Biodiversity and environmental/planning issues have needed much time and energy in recent years and it was with deep regret that Councillors received the resignation of Leanne Steed whose dedication and expertise will be missed. Fortunately, Leanne will continue in her role as Chairperson of Ash Wildlife Friendly Village.

Pound Corner has already undergone refurbishment with more planting to follow but is already a much pleasanter space providing a focal point for the centre of the village.

In the meantime watch this space for the date of a planning meeting for all parties wishing to set up a stand or run an activity at the Ash Summer Picnic on Saturday 13th July from 12-4pm. The Annual Parish Newsletter is also to be printed shortly and will be available by the end of April.

The Parish Council will meet again on Monday 8th April. We now have vacancies for three new councillors which puts a strain on existing members and affects what we are hoping to achieve. If you think you may be interested, and in a position to help, do come along as an observer or contact our Clerk.

Contact the Parish Council by email at clerk@ashparishcouncil.gov.uk or visit the parish council website at ashparishcouncil.gov.uk

Asian Hornet Found In Ash

Thanet Beekeepers have issued an alert after an Asian Hornet Queen was found hibernating in flowerpots in a potting shed near Ash.

This is thought to be the first sighting in Kent this year of the invasive and distributive pest which feed on bees and wasps, so can have a devastating impact on the local insect populations.

In Kent, thousands of bees have been killed by Asian hornets.

Thanet Beekeepers issued this advice: “If you see something you think is one please get a picture of it. If you can trap it under a jar or similar that would be great. Queens are not aggressive and they may still be quite inactive but they do have a sting.

“If you are not sure you can send a picture here or via email at ThanetBKA@gmail.com or you can report it on the “Asian Hornet Watch” App available through Apple or the Android Play Store.”

How to spot an Asian Hornet

The Asian hornet has distinctive yellow legs compared to other insects. Its body is a velvety brown or black while the abdomen is almost dark, except for the fourth abdominal segment which is dark yellow. The Asian hornet has a black head and yellow face. Typically, Asian hornet queens (egg-layers) are 30mm in length and males about 24mm while the workers measure about 20mm in length.



Pound Corner Refresh

Ash Parish Council has undertaken a makeover of Pound Corner, including refurbishing the benches, removing, and tidying up planted areas and replanting, improving the paving.



H

Ash Heritage Group

Free to attend

Open Morning

- Discover the history of Ash
- Browse treasures from the past
- Share your memories

Fun for all the family and a fantastic opportunity to find out more about the amazing work that the Heritage Group do to preserve the history of Ash. You might even be able to help us identify the people or places in our collection of historical photographs.

Fun activities for the kids - Watch films from Bygone Ash - Browse our extensive display of treasures from the Ash Heritage Centre archive



Ash Village Hall
Sat 11th May 2024
10am - 12 noon



www.ashheritagegroup.org.uk

Litter Picking Sweep

On Saturday 16th March, volunteers set out to pick litter as part of the Great British Spring Clean, organised by the Keep Britain Tidy campaign. In under two hours, 16 bags of litter and rubbish collected.



Councillor Louise Venny, who organised the pick on behalf of Ash Parish Council and Ash Wildlife Friendly Village group, said: “Thank you to everyone who took the time to join in and thank you to the team at The Chequer Inn Ash Society for providing coffee and cake.”

Dover District Council loaned the litter picking equipment and arranged for collection of the rubbish.

Regular litter picks are organised by the Wildlife Friendly Village group, follow them on Facebook at Ash Wildlife Friendly Village.

Share your news with the parish magazine.

We welcome reports from local clubs and groups and individuals.

Letters, recipes, memories and more are all gratefully received.

To submit your news, email rebeccasmith.ash@gmail.com or post hard copy at 69 The Street, Ash.



ASH HORTICULTURAL SOCIETY SPRING SHOW

**SATURDAY 20TH APRIL
ASH VILLAGE HALL
9AM-3.30PM. (SHOW OPEN TO
VIEWING AT 2.30)**

Open classes include

- ***Baking***
- ***Photography***
- ***Flower arranging***
- ***Children's crafts***

Refreshments available

**FOR MORE DETAILS SEE
REPORT IN THIS MAGAZINE**

Science Innovation Grant for Ash Farm

Ash farmers AC Hulme & Sons have tested new technology and artificial intelligence to reduce the amount of energy needed to store apples.

The project with the University of Greenwich, was part-funded by a grant from the government-funded Growing Kent & Medway project.

The trial looked at ways of cutting energy use, without compromising the quality of the fruit, helping to tackle rising production costs, partly driven by the increased price of the energy used to refrigerate and store the fruit after it has been picked.

Football Star Stops By

An unexpected guest popped into Juliet's Farm Shop Café for a full English breakfast to the delight of staff and customers.

Former England football star Ian Wright stopped by while visiting the village as part of a national campaign promoting girls playing football.

He visited a local school which hosted a tournament for girls, offering coaching advice and encouragement.

Wright, who enjoyed success with London clubs Crystal Palace and Arsenal as well as earning 33 caps for the England national team, posted a video of his breakfast on his TikTok account.



Ash with Westmarsh W I

Next Meeting
on
Thursday 11th April
in
Ash Village Hall 2.30-4.30pm

Do come along for an entertaining afternoon with Jacqueline Aviolet, talking about:

“How she got a water connection to a field in the middle of nowhere”!!

www.thewi.org.uk/ashwithwestmarsh

Non-members most welcome £4.00

Ash Lawn Tennis Club

Membership Packages: These are now available, with membership to run 1st April - 31st March 2025. Prices remain the same as last year (£30 Single, £50 Couple, £60 Family etc).

Pickleball: Both courts will have pickleball lines to allow the courts to be available for pickleball use. An open-session is scheduled on Saturday 20th April (10am-12pm) if you would like to give-it-a-go. Rackets and balls will be provided. A regular pickleball club-night is also planned, most likely on Monday evenings - more info to follow. Find out more about pickleball at www.pickleballengland.org

Tennis: Club-night will start in April on Thursday evenings from 6pm. We are also planning a series of junior coaching sessions with David Whitehouse - please let us know if interested in this. Three social tournaments are planned on Sunday 12th May, Sunday 23rd June and Sunday 8th September.

More information and membership inquiries to ashkenttennisclub@gmail.com

Ash Bowling Club

The club is open all year round for Short Mat Bowling and our Lawn Bowlers are looking forward to the start of the season. New members and visitors are most welcome.

Below are some dates of early season events:

- Sunday 7th April: Ladies' Coffee morning 10am-12noon at the club.
- Saturday 13th April: Sub paying day: 2-3.30pm at the club.
- Saturday 20th April: Opening of the Green 2-4pm tea afterwards.
- Sun 21st April: Our First Friendly Match Victoria Park, Deal. Away.
- Saturday 4th May: Ash Village Coffee Morning 10am-12noon at the Village Hall.
- 10th and 11th May Open Weekend: New players welcome to come and have a go at Lawn or Short Mat Bowling. Friday 6-8pm, Sat 10am-3pm, Sunday 10am-3pm.
- 24th -27th May Big Bowls Weekend: The Club will be open on Friday 6-8pm and Sunday 10am-3pm.

New members and new bowlers are welcome to join club players on Friday evenings from 6-8pm with Ladies only from 5pm and Saturday Mornings from 10am-12noon. Qualified coaches will be available at these times. Come and join us.

Shirley Taylor



Coffee Morning

Ash Village Hall

Saturday 6th April

10am to 12 noon

Everyone welcome

Bacon baps * Coffee and chat * Exciting raffle

Cake and Savouries stall * Bric-a-brac stall * Book stall

Information about how Christian Aid is supporting poor communities around the world

If you have donations for the raffle, book stall and bric-a-brac stall do leave these in the church porch. Any cake and savoury donations can be brought to the village hall on 6th April.

Thank you!

League of Friends of Kent and Canterbury Hospital (Ash Branch)

At the community coffee morning on March 2nd we raised £92.50 and we thank everyone who came along to support our stall.

We are always pleased to receive used stamps and old coins which help to raise extra money for the hospital.

A date for your diaries: we will be helping with The League of Friends Annual Fair at Canterbury Hospital on Saturday 17th August 11am-3pm. More details later.

In the meantime, we look forward to seeing you all again on Saturday April 6th in the village hall.

Hazel Damiral
01304 772363

Ash Horticultural Society

The Spring Show

Spring has sprung, and with it comes the chance to enter the Ash Horticultural Society Spring Show which takes place on Saturday 20th April at Ash Village Hall.

Members have details of all the categories available to enter, but everyone is invited to enter the open classes. Category details over the page.

To enter all you have to do is e-mail the classes you want to enter with your name and membership number (except for Open Classes), and your telephone number to sunrise@landmine.me.uk or post them to Liz Rath, 13 The Street, Ash by 6pm on Thursday 18th April.

After this time, late entries, 50p per class, will be accepted in the hall only before 9.30am on the day of the show.

The show will be open for viewing from 2.30pm and refreshments will be available. Prize giving at 3.30pm.

Good luck.

Liz Rath

Open Classes

Flower arrangements (the Jutson Cup for the winner)

1. A bridesmaid's posy. Max. diameter 4" /10cm
2. An arrangement in a fruit or vegetable Max. diameter 16" /40cm
3. Table arrangement for a Golden Wedding Anniversary celebration
Max. diameter 24" /60cm

Please check the width of your arrangement - Too wide? – Disqualified!

Photography (The Gerry Edwards Foundation Cup for the winner)

Max 4"x 6"(10cm x 15cm) no masked entries

4. Christmas Time
5. Tiny Creatures
6. Borders
7. Sky

Cookery (a prize is awarded for the winner)

8. 5 chocolate brownies
9. Milk loaf plait
10. Jar of chutney
11. Decorated carrot cake
12. Vegetable tart

Open Class (enter as an individual, a family or as a group)

An exhibit of a character or scene from a children's book

Children's Classes: age groups 6 and under, 10 and under, 15 and under

(The Sylvia Profitt Cup is awarded for Best Effort in children's classes)

Children can enter up to three of the following classes.

- A. A painted pebble
- B. A photograph of Tiny Creatures
- C. An arrangement of flowers in a decorated jam jar
- D. Fruit jelly in a glass

Meeting Report - Carnivorous Plants

Dr David Roberts from the Durrell Institute of Conservation and Ecology (DICE) at the University of Kent gave us an enthusiastic talk on these fascinating plants. His interest started as a small boy, when his father built him a large tank to grow his collection of orchids and carnivorous plants. His collection was transferred to Kew where he worked for several years.

After Charles Darwin had published his magnum opuses (or magna opera), *On The Origin of Species* and the *Descent of Man*, he turned his attention to Insectivorous plants, which were defined as 'those plants which by some means or other capture living insects, and then profit by their digestion or decay, in aiding their own growth'. They are now known as carnivorous plants; insects are their major prey but they also trap and digest other arthropods (such as beetles), lizards, small mammals and

birds, but not humans as claimed for the Madagascar Tree in the New York World in 1847.

Carnivorous plants are found throughout the world (except in the Antarctic) usually found growing in nutrient-poor (especially nitrogen-poor) locations, often in acidic bogs, but also on bare rock. They still rely on photosynthesis to supply their energy but rely on their prey for other nutrients. There are over 500 known species, with more being discovered on jungle expeditions by enthusiastic botanists.

In the UK we have the Sundew (*Drosera rotundifolia*) which catches its prey with sticky droplets at the end of tendrils on their leaves. The leaf curls up and releases enzymes to digest the prey. The Common Butterwort (*Pinguicula vulgaris*) has pretty violet-like flowers but uses sticky fluid on its leaves to catch its prey. These are examples of flypaper traps.

Also in the UK, the Lesser Bladderwort (*Utricularia minor*) floats in pools in peat bogs using bladder traps. On its stems it has small bladders which are maintained at a lower pressure. When a small invertebrate touches the hairs on the bladder, a trap door opens within milliseconds and the prey is sucked in to meet its fate.

The most well-known carnivorous plant is the Venus flytrap, so beloved of small boys. It is an endangered native of the wetlands of Carolinas in the east of the USA but is widely available in cultivation. It is an example of the Snap Trap. The trap is an adapted leaf, hinged in the middle, with sensitive trigger hairs on their inner surfaces which stimulate the open leaves to clamp shut when touched, known as thigmonasty. (Alas, too many letters for Scrabble).

The most glamorous of the carnivorous plants are the many and various Pitcher plants. These use pitfall traps, adapted leaves which form a deep vat into which the prey falls attracted by nectar and bright colouring and patterning. The lip of the pitcher is waxy, and slippery. Downward pointing hairs prevent prey from climbing out. At the bottom, the prey is drowned and digested. The Trumpet pitchers (about a dozen *Sarracenia* species) are native to wetlands in the United States, where they are under threat, although enthusiasts have introduced them to the Lake District, Germany and Ireland.

Trumpet pitchers can reach several feet tall. They hybridise freely, varying from pale yellow, and green, to pink, maroon and purple, all with deeply veined pitchers - some cultivars have even been awarded AGM status.

The other major carnivorous plants are the tropical pitcher plants or monkey cups, with over 150 species of *Nepenthes* in the tropics, especially in Indonesia and Borneo. Some hang on tendrils, other larger pitchers sit on the ground looking rather like lavatory bowls - which in some cases is appropriate. The largest pitcher, *N. rajah*, can grow up to 41cm high and 20cm wide, holding 2.5 litres of digestive fluid. *N. attenboroughii*, recently discovered in the mountains of the Phillipines, is only slightly smaller.

Many species, or their remains, have been found in larger pitcher plants, including lizards, frogs and rodents. However, a wide variety of species have formed a beneficial association with pitcher plants. Some frogs breed in the pitchers and crab spiders eat prey from them. The diving ant eats prey and keeps the lips of the pitcher slippery.

Several species of *Nepenthes* produce a sweet, fruity secretion on the underside of the pitcher lid. This attracts tree shrews which perch on the rim of the pitcher to reach the lid. As they balance on the rim, they poo into the pitcher. The plant gets its nutrients, not from digesting the shrews, but from their droppings. Another species of *Nepenthes* provides a roost for small bat colonies of Hardwicke's woolly bat which hang from the lid and obligingly provide their droppings for their sanctuary.

It has recently been proposed that one species, *N. ampullaria* has moved away from carnivory. The tightly packed pitchers sit on the jungle floor beneath the forest canopy, trapping leaf litter which provides required nutrients. Vegetarian carnivores!

Liz Rath

Ash Wildlife Friendly Village

After the success of February's Wildlife Day, Ash Wildlife Friendly Village is holding a practical workshop on recording nature in the local area.

The workshop will take place on April 6th, meeting at Pound Corner at 1.45pm for a short walk to the survey site, followed by a two-hour practical workshop led by ecologist Neil Coombs. Afterwards, participants are invited to The Chequer Inn for refreshments and to discuss findings.

Participants will need to be able to walk across open ground. Equipment needed includes pen, paper, clipboard and ideally a mobile phone with camera or a camera as the workshop will also cover uploading sightings to the iNaturalist site. For more details or to register email ashwildlifevillage@gmail.com

The Friends of St Nicholas Church

Race Night

On Saturday 3rd February, The Friends welcomed over 100 people to their Annual Fun Race Night in Ash Village Hall with the racecourse colourfully decked out with bunting and posters.

Many of the excited race goers were new to the village and couldn't wait for the fun to begin.

There were 8 races throughout the evening and the winning horse owners all received a rosette and bottle of bubbly and their jockeys received a free drink at the bar.



With lights flashing at the start of each race the crowd went wild cheering on their favourite steed as volunteer jockeys reeled them in over the full length of the hall course. As the finishing line approached the noise was deafening and the winning horse and jockey were met with hysterical cheers as the course lights came back on. A tremendous atmosphere was created all evening by the excited crowd, helped no doubt by the well-stocked reasonably priced licensed bar, which was kept very busy.

The evening also included a tasty home cooked meal with veggie option; a raffle with 22 incredible prizes, including a star prize of an overnight B&B stay at the famous Mermaid Inn, Rye, generously donated by local businesses and the Friends and committee members; £10 for the lucky entry ticket winner; and a box of chocolates for the night's best jockey. The last race auction of horses resulted in a further £35.50 prize money for the winning owner and a bottle of bubbly.

As always, we are indebted to our annual advertisers and the 21 race night sponsors who helped us raise a record £2,176.75. This tremendous total was also after awarding £105.43 worth of prizes (not including raffle prizes), so a massive thank you.

Thanks also to Tony Jones who acted as MC; all the hardworking committee and their partners and friends for their help; and all who attended and were so generous on the night. Some were already asking about the date for next year's race night!

A brilliant well organised fun evening well supported and enjoyed by all who attended.

Please note that this event was sold out within 2 weeks of the tickets going on general release and some couldn't get tickets, so to avoid disappointment for our next race night and our other events, contact me (01304 813138) or another committee member for a Friends membership form and you will receive preferential treatment for tickets and early preview of the artwork in our very popular annual Art Exhibition, this year on 4-6 May.

Panto Bar

In January, the Friends once again provided a very reasonably priced well stocked licenced bar for the 5 excellent performances of Mother Goose staged by the New Ash Players in Ash Village Hall.

Every performance was very well attended or sold out, consequently the bar was very busy and made a huge profit of £744.92. The Friends would like to thank everyone who used the bar and helped us raise such a large amount.



The Friends would also like to thank the New Ash Players for once again inviting us to provide the bar for them, our 13th consecutive year, and retain all the profits. All the shows were brilliant and the cast obviously worked so hard to ensure audiences went home smiling and happy. Well done and thank you.

The money from both events will be used, as all our funds are, to help maintain the fabric of our lovely church. Latest projects include part funding for the restoration of the clock and an upgraded PA system.

Chris Burnside, Chairman

The Chequer Inn Ash Society (CIAS)

The Chequer Inn is a community owned pub and a member of Plunkett UK which is flagship organisation supporting community owned businesses across the UK. By now many of you will have been into the

refurbished Chequer Inn to see what has been going on over the past few weeks. Jordan is the new manager who hails from Deal, he will be front of house and overseeing the kitchen and bar staff. Go in and meet the team!

A new range of bar food and meals are available as well as fantastic cakes and teas. Coffee is now served from an impressive looking machine.

Alongside this there is improved comfortable seating with a cosy Country pub atmosphere. These developments have been undertaken in response to customer feedback. You have been listened to.

Community activities are welcome and we find are best organised 'organically'. By that we mean starting from what a group need or want. To date this includes the Old Gits on Thursday evening and Knit & Natter on Tuesday 5-7pm.

Everyone is welcome to join us for tea and coffee and some friendly chat at Meet up Mondays. Our community warden Pete Gill is often to be found there as well as a PCSO. From time to time we have a visit from a Parish Councillor.

Bat and Trap will recommence in the garden at the end of April.

If you think the Community space could be used for other events, purpose and functions you can email us at chequermates@gmail.com with your ideas or find us on Facebook @ Chequer Inn Ash Society.

David Greaves

New Ash Players

Thanks have been received from the East Kent Group of the Motor Neurone Disease Association after the Players made a donation of £500 to the charity, raised through the sale of raffle tickets at the annual panto performances.

The money will be used to provide equipment and services, support research and awareness raising.

Friends of Elmstone and Preston Churches

News

We welcome our new vicar, Rev'd Caroline Turvey, and look forward to working with her. The faculty for work at St Mildred's Church has recently been granted and grant applications are now going ahead. We thank

those who have kindly given donations. We are expecting the work to be carried out later this year. This will include the installation of a toilet, kitchen and rainwater drainage which it is hoped, over time, will considerably reduce the dampness in the church.

The Friends continue to support St. Mildred's and Elmstone Church in many ways, including contributing £2,000 towards the insurance of both churches which currently costs a total of just over £3,700 a year. We plan to have some fundraising events at both St Mildred's and Elmstone Church this year.

Mothers' Day Service at St Mildred's

This service was taken by Anne Talbert. During the service, flowering plants were given out to the congregation and also taken to those who could not attend afterwards. Our thanks to Penny Cornet for organising this.

A report on the Palm Sunday and Easter Services will appear in the May issue.

Happy Hours at Elmstone Church

These events are continuing at 6.30pm on the first Friday of the month, in the Church or on Church Meadow, weather permitting. Future dates are Fridays 5th April and 3rd May. Everyone is welcome.

Village Fete at Elmstone - Sunday 9th June, 2.30-4.30pm

As part of this event, The Friends will be serving teas at the church. Please make a note of the date.

Our Church Services are Normally:

1st Sunday - Holy Communion - Elmstone 10am.
2nd Sunday - Family Service - St. Mildred's 10.30am.
3rd Sunday - Holy Communion - Elmstone 10am.
4th and 5th Sundays - No regular services
Refreshments are served after all our services.

Elizabeth Timms

The Arts Society Sandwich

The upcoming Arts Society Sandwich lectures will be held in The Guildhall Sandwich, at 7pm with refreshments served from 6:30pm:

Monday 8th April: Denise Heywood - 'Silk in South Asia'

Luxurious, sumptuous silk, beloved by kings and courts, priests and princesses, is a miracle of nature. The thread of silkworms, woven into fabric, its process guarded in China when discovered, became so valuable it was a source of currency.

Please visit www.sandwichfas.org.uk for membership and programme information. Guests are also welcome to attend (£7 on the door). You can also follow us at Facebook at [theartssocietysandwich](https://www.facebook.com/theartssocietysandwich). We look forward to your company.

Chloe Foster

A Different View



Views south and east of Ash from the top of St Nicholas church tower, taken at the open day in March. The tower will be open again on May bank holiday weekend. See page 30 for details.



Photos by Emily Hawkins.

Readers' Letters

Going, Going... Philip Larkin

I moved to Ash the year plans for the bypass were approved. A welcome change for the village. Today, I found a less welcome change: outbuildings at White Post Farm which were part of the conservation area removed at the "request" of the developers.

The buildings form the four sides of a small paved yard, a scene almost from a Dutch Master. Beautiful and peaceful. As I walked to the local shop today, I noted all the other changes that have taken place in the time I have lived here. Behind me was a smallholding – now Collar Makers Green. Next door, a nursery and garden centre, now a private house. Then the agricultural merchant and Cowan's Orchard – both gone and scheduled for housing. Past Cherry Garden Lane and the Old Rectory was the old brewery and the Puma Power yard. Opposite them a petrol station. The list goes on: White Post Farm, now housing on a private road, a dentist, The Red Lion pub, a Post Office, an electrical goods and repair shop, a god shop, Church Gate Bakery, who would deliver fresh bread to your doorstep, an antique shop, the United Reform Chapel and hall, Bicker's newsagent, again home delivery, now a pizza shop. A vets, a butchers and a builders yard with a small but useful DIY shop.

Many of these have gone to housing in one form or another, so while the population goes up, the services and the jobs that went with them have gone. Shopping now means getting in a car.

Somehow the loss of the buildings at White Post Farm have upset me the most, possibly because of the memories of sitting in the kitchen there, drinking tea with Lilly Deal, and in November helping her with the grape harvest – usually about 20lbs – enough to make a gallon of wine. (2003 was an especially good year). I have no doubt there will be those who have lived her longer than I have who have other memories. It would be good to share them before memories fade, not for some rosy nostalgia, but a check on what we have lost and what we still stand to lose, if we are not careful.

Paddy O'Halloran

Joy and pain

What a joy to see Pat Cole's lovely sketches of Waxwings, such pretty birds, I've only ever seen them down on the Worth marshes, some time

ago now! Her drawings are full of movement and expression! Well done Pat. I also applaud the letter from Christine Brown on the insensitive way the hedgerows have been cut, in many areas, no thought for wildlife whatsoever, ouch!!

Rosemary Murgatroyd

Mothering Sunday Posies

We would like to express our sincere thanks to Minters the florists who once again gave us a wonderfully generous donation of lovely Daffodils. They were made into posies for distributing at the Sunday service at St Nicholas Church, where they were gratefully received by the congregation.

Thank you.

The St Nicholas Church Flower Arrangers

Food Stories

Nikki's Place

So this all began in the early to mid-2000s. I was invited to Bangkok on business by some Australian and New Zealand companies. By this time I had been living in New Zealand since 1993 (some 15 years). Thus it was around 2008 that I first went to Thailand.

Although not a lover of those big over-crowded cities, I did visit some amazing places and could quite understand why a good mate chose to live on the outskirts of Bangkok. However, I did make a couple more work trips and it was not long before I ended up living on the outskirts of Bangkok myself and travelling back and forth workwise to New Zealand.

In 2014 due to changing circumstances I moved to the northern part of Bangkok called Chiang Mai where I met some lovely people as well as expats. As I lived at the foot of the mountains and had many visitors I would always take them to see the (Chung) elephants in their natural habitat. We also visited the mountain people and although the children ate well, their homes and clothing were far from warm in winter time. I've got to say it upset me to see how these kids had to live. The police would not allow them into town because they were not registered or did not have ID cards. I made it my mission to try to help somehow. It wasn't easy and

the only way I could give them warm clothing was through a school in town. I felt helpless and so much wanted to help these amazing kids.

I was introduced to a Thai lady who had just returned from Germany. She spoke four languages and knew of the mountain people but she also told me I could not bring them down to town. However, and this was still 2014, she knew of a Christian home which had been started over 20 years previously by a Canadian lady, Avis Rideout (pictured) and her husband Roy. Their first baby they took into care was Nikki, abandoned by her parents and suffering from AIDS. I asked if I could visit them.

We went to meet Avis and Roy and all the kids and the team who worked there. They all captured my heart and still do today.

I was on a real mission to raise money from expat friends and have a first Christmas party in 2015. We did it. Enough money was raised to have a Christmas party at a French friend's restaurant in Chiang Mai for 25 children. Four years later, we hosted a party for 60 children.



Other companies got involved and a Dutch lady has been raising money for them for over 25 years as the home needs about 1.4 million Baht (£31,000) every month to break even. The home now looks after over 100 orphaned children and babies suffering with HIV/AIDS related illnesses. Nikki was adopted by the Rideouts and successfully treated for her own health problems. Today, a large portrait of Nikki is prominently displayed at the Agape Home. She is now 32 years old and lives with members of the Rideout family in Canada.

I am travelling to Thailand very soon and looking forward to one of my favourite dishes there. You can make it with chicken, prawn, pork or tofu. It is called Khao Soi. If you would like to see photos of the Agape Home here is the website address: www.agapehomethailand.org

This is my version of a Red Curry based on 'Kai' (chicken)

Andy Wray

Ingredients:

- Medium size chicken
- Blue Dragon Red Curry paste (you can make your own but I find this saves a lot of time)
- 2 tbsp pure coconut oil or vegetable oil
- 1-2 tbsp crystallised stem ginger (use according to taste)
- 1 tbsp garlic paste
- 800ml coconut milk
- Grated lime peel
- 2 tbsp fish sauce (available in all supermarkets)
- Jasmine rice - (microwavable bags available in all supermarkets and Tilda have a coconut rice gluten-free) or buy ready to cook and follow instructions below.)

Method

Cook a medium-sized chicken. The method is up to you. Set aside.

Heat your hob to low to medium heat. In a large saucepan add coconut or vegetable oil and stir as it reduces.

Add the ginger and then the garlic paste, stirring all the time.

Add the Thai red curry paste, stirring all the time. Do not overheat. Check for taste. Put the lid on the saucepan and let it stand.

Cut large chunks of skinless, boneless chicken enough for 4 people. Put it to one side.

Return the saucepan to the hob, medium heat, and add 800ml coconut milk, stirring all the time.

Turn heat down to very low.

Add grated lime peel.

Add 2 tbsp fish sauce.

Add the pieces of chicken and stir well.

At this point I have the Jasmine rice cooking. For 'Ready to Cook' rice, rinse first, add a little salt and two caps of Virgin olive oil to the water.

Return the chicken and sauce to the hob, stirring and checking it is heated thoroughly.

Put the cooked rice in a warm serving bowl and place the chicken curry on top.

Friends of St. Nicholas 20th Annual
ART EXHIBITION & SALE
at **St. Nicholas Church, Ash**

Dates and Times:

Saturday 4th May
10.00 – 18.00

Sunday 5th May
10.00 – 18.00

Monday 6th May
10.00 – 17.00

Featuring:

- + Over 500 exhibits
- + Church Tower open
- + Home Made Food
- + Debit/Credit cards accepted



Admission - £2.00 for Adults
Children under 16 Free

Kindly Sponsored by Rex Cadman



[www.facebook.com/
friendsofstnicholaschurchash](http://www.facebook.com/friendsofstnicholaschurchash)

For more information

Email fstnicholas@gmail.com
or
Call 01304 812049/813138

Church Website:
[https://thecanonrybenefice.org.uk/our-
churches/saint-nicholas-church-ash-
village-in-kent/](https://thecanonrybenefice.org.uk/our-churches/saint-nicholas-church-ash-village-in-kent/)

Cover Story

Last half-term on a bright, sunny Monday in February I went to Walmer with my daughter, her husband and their daughter who is 10. We walked from the castle end of the beach up to the little café on the Green, wonderful bacon butties and warm enough to sit outside! Staying down near the sea, we 'beach combed' on our way there, then walked back on the pavement admiring the beautiful houses along that stretch of the road. What amazing sea views they all have!

As a family they enjoy fossil hunting, locally at The Warren near Dover, but have also had camping holidays on the Jurassic coast of Dorset and are very good, heads down investigating anything unusual or eye catching. My granddaughter made me earrings and a necklace with 3 tiny ammonites she had found and cleaned, very special!

Last month I talked about looking up to observe life above and around us, here we were focusing down, I lived in Deal for a couple of years, some time ago and used to collect stones with holes right through them, which I linked together and strung up in my little yard garden. Once you start really looking it becomes compelling! We didn't find anything unusual, but I enjoyed my little 'hoard' and hopefully created a pleasing group to draw: The dark round stone and the smaller two toned one have holes going right through them, the 2 potato like ones, with many small holes, some quite deep, are sandstone, the smaller many holed one on front right is chalk. The darkest stone is flint with an interesting pale section, the little triangular one on the left may be piece of worn -down brick, but an interesting wave like ripple along the top of it. I've no idea what the speckled one is, possibly granite, but as we turned it in the sunlight it sparkled, it's a pale blue-grey. There were many, many clumps of the empty shark cases, but I liked these three, with their golden curly threads holding them together and wound around the root and stem of the sea weed, whose 'spectral fingers' wave over the stones. The 3 empty cases were almost transparent and caught the sun's light, making them a pale gold, a great contrast to the well-known Mermaid's Purse, an empty egg sack of a ray, but still seems to have a life of its own!

I'm now back in Norfolk with the Husky, whose picture a number of folk enjoyed in the summer, she's well but now deaf, so I keep her on an extending lead when we walk, as she can still put quite a good burst of speed on when she wants! On this morning's walk, just before the rain started, we saw a huge flock of Siskins going from tree to tree along the



Ash Wildlife Friendly Village



Practical Workshop in Wildlife Surveying and Recording Nature

Saturday 6th April

Meet 1.45pm at Pound Corner. Walk to survey site.

2-4pm Practical workshop with ecologist Neil Coombs.

Places limited: For more information and how to register see report in this magazine.



river path, some hanging upside down, like last month's Waxwings, collecting the seed from the beech nuts and other berries, keeping up soft high-pitched trills as they went. The very fast flowing river Wensum is finally going down, when I arrived last Sunday, it still flooded over most of the paths to wellie height! But this morning they were mostly dry. Some of the woodland paths were unsafe because you couldn't see the river's edge.

Now, writing on the first day of Spring, I'm sure we all hope that the weather will improve across the country, especially for our farmers. Heavy rain this morning gave way to a few hours of bright sun this afternoon in time for the children coming home from school. Have a great Eastertide and enjoy all that April has to offer.

Pat Coles

Garden Jottings for April

After so much rainfall in March, we must be careful when walking on the lawn or working on the borders to avoid compacting the soil. Any very wet lawned areas can be treated by spiking the lawn with a fork repeatedly all across the soggy areas then brushing horticultural sand into the subsequent holes made by wiggling the tines of the fork. When the weather is fairly dry scarify to remove thatch and moss then top dress with compost, seeding any bare patches. Broken edges can be repaired by cutting a square patch and reversing it, filling the consequent bare area with soil and seed.

Always cut lawn ledges sloping away from the lawn with a sharp half-moon cutter to alleviate broken edges. Make sure to use a rubber or wire lawn rake to lift the grass and remove debris after working on the border especially when the ground is very soft.

When tidying around the lawn edges keep an eye out for small seedlings which you can replant elsewhere in the flowerbed. Perennials can be moved, split and replanted. Sweet Williams, Foxgloves, Canterbury Bells, can be spread among the plants. Gladioli, Lilies and Alstroemeria planted in grounds between permanent planting. Hardy annual seeds can be sown in drifts including Clarkia, Godetia, Nigella to give summer brightness.

Deadhead Pansies and Polyanthus to prolong the display. Remove seed pods from Daffodils but allow leaves to die down naturally.

If you overlooked treatment of Wisteria which should be pruned in late summer after blooming and again in late Winter – early Spring, take off any long straggly shoots and cut other shoots down to 3-4 buds, this will stimulate flowering. However, if the flower buds are much in evidence it is too late this season, but remember to renovate in late Summer, keeping only any trailing shoots needed to cover trellis or fences, removing all others back as before.

Any other pruning should be completed now removing any long untidy branches and broken or damaged twigs. Roses should be sprayed against black spot disease and aphid infestation.

Grasses can have the old strawy growth removed, taking care not to snip off any developing new growth try to “comb through! The old strands to make the clump neat and tidy. Large ferns also look better after removing old and tatty foliage to reveal the new curled fronts ready to grow and develop.

Hanging baskets can be planted up, if you have room to keep them inside till late May. Add some controlled release fertilizer to the compost when planted up with maybe Petunias, Verbena, Nemesis and Lobelia which will all give a good bright display during the summer season.

Sow French and Runner beans, starting with French Beans first in trays or if you have room in small pots. French beans will be ready to fill the gap until the Runners are producing. Erect bean poles or canes over the trench you made earlier in the year. The compost should be well-rotted by now and can be covered over when you put the supports in place. Pull the soil up over potatoes as they begin to push through the soil, building up a ridge to over the leaves as they develop.

Sow courgettes, sweetcorn, squash and aubergine seeds indoors, also grow marrows with two seeds to a pot removing the weaker one when planting out later over a well manured site later next month.

If you sow only very fine seeds, water the compost first to avoid washing away the seeds then cover with some vermiculite.

Keep hoeing small annual weeds on sunny days as they will die off quickly then.

If you notice areas that could benefit from some brightness now, make a note on your calendar to buy and plant a selection of bulbs in September including Iris, Hyacinths, Scilla and Dwarf Narcissi.

Though the worst of the frosty weather should be past, keep some fleece handy to spread over tender plants and shrubs. This fleece can be washed in the machine if it becomes very grubby!

Enjoy the unfolding beauty of our wonderful world in Spring.

Christine Brown, President, Ash Horticultural Society

PS. What good news to see the sapling planted in the Jack Foat Field. It has been grown from a shoot sprouted from a cutting from the Black Poplar cross tree so sadly cut down in the churchyard. May it grow and flourish.

Stories From the Archives (50)

Through a Glass Darkly - Episode Two

Readers of this series will recall that last month's instalment described the exciting project embarked upon by the Ash Heritage Group in conserving and beginning their research on the extensive collection of glass plate negatives donated to the Group a few years ago. It was explained that the photographs were local, that they were from the 1914-18 period and comprised a mixture of military and civilian subjects.

This is the 50th article in the series and so perhaps we should discuss something special. Well, it's that photographic collection which seizes our attention once again because developments (no pun intended) are now racing ahead. It will be recalled that identification of local people, among them the nurses portrayed in photographs while serving in the VAD emergency hospital in the village hall during the Great War, were among the Group's initial plans. They have started well, because one of the Group's founder members, Nina Vallack, recognised a figure in one of the developed negatives as being the same woman she'd seen photographed in nurse's uniform in a snapshot already in the Group's collections. Out comes that picture ... and yes, it's the same woman, already known to us as a Mary Chandler.

Initial comparison between the hospital's admission & discharge register and an attractively illustrated autograph album from the hospital provided some rapid clues. Kimberley and Yvonne Feeley soon got to work and some of the captions to group photos among this ephemera have already identified all the nurses for us. Mary Chandler not only appears in these groups but also, crucially, in a local wedding group that Kimberley had developed from one of the glass plates, where Nina spotted her. The

groom was a young soldier – and was that a maple leaf emblem on his collar badge?

Rapid genealogical research by Kim and Yvonne (you can't stop these two once they're off!) established that she was – from a number of local Mary Chandlers - a Mary Fells Chandler in the wedding group picture, and that her daughter, Winifred Madeline, had married a George Stewart Dunn on 4th April 1918. And not only did a local press report confirm that he was serving in the Canadian Expeditionary Force (in the Canadian Army Medical Corps to be precise) but it will be clear to today's reader that this Congregational Chapel wedding had joined together two well known local families. The parents' backgrounds were in fruit growing and



pharmacy and the bride's parents lived at The Laurels, Goldstone, where the reception took place. Just two days previously, George had been serving at the Front but had been granted special leave to travel home to Ash for his wedding. This in itself is remarkable, as he had secured his leave at the most critical point of the war for the Allies, when every man on the Western Front was desperately needed as the German Spring Offensive threatened to trap the BEF against the France and Flanders coast. Exactly a week after the wedding, among headlong retreat and with losses mounting alarmingly, Field Marshal

Haig issued his famous Special Order of the Day: "With our backs to the wall ... we must fight on to the last man" while George enjoyed his honeymoon in Devon in the April sunshine!

As well as the group photo, Kim has also developed an image of the happy couple, both pictures shown here. Winifred's mother, Mary, is



pictured sitting, far left, next to the groom. It will be good to know the identity of all the others in the group, as well as confirmation of the photographer's name, which we hope fits into the Group's current deliberations. So the project is off and running at last, and we fully expect to hear that the group wedding photograph, at least, still hangs on a parlour wall somewhere in Ash, in at least one of the homes of the two families involved! More discoveries and revelations – undoubtedly involving relatives of many current Ash families – will be emerging soon, and a selection of these wonderful discoveries will be shown at the forthcoming **Open Morning** being arranged by the Ash Heritage Group on **Saturday 11th May**, when a wide variety of the Heritage Centre's vast collection of local holdings will be on show. That's one date you *won't* want to miss!

The Ash Heritage Group - collecting, preserving and sharing the heritage of Ash.

www.ashheritagegroup.org ashheritagegroup@gmail.com

Peter Ewart



foot fine care

Setting your feet free

We provide care and treatment for foot and nail conditions, as well as micro-suction ear wax removal, in the comfort and privacy of your own home. Based in Canterbury, serving South East Kent.

- EAR WAX REMOVAL • NAIL CLIP AND FILE
- CORN + CALLUS REMOVAL • CRACKED HEELS
- INGROWN NAIL • FUNGAL NAIL INFECTION
- THICK NAIL REDUCTION • DIABETIC FOOT CARE • VERRUCA



WWW.FOOTFINECARE.COM

MON-FRI 9AM-5PM

07526 355488 - footfinecare@gmail.com

Do you make Spelling, Grammar or Typo Mistakes?

Everybody does. So do computers!

Get what you write checked by a certificated

PROOFREADER / COPY EDITOR.

Call or email **CHRIS REEVE** on

07938 665259

creeve296@hotmail.co.uk

I'd be happy to help



*Registered Member of
The British Association of
Foot Health Professionals*

MEMBER OF
THE SMAE INSTITUTE

Sally Roberts *DipFH. MCFHP. MAFHP.*
Foot Health Practitioner

Visiting Practice

Ashwood Farmhouse
Mill Lane
Preston
Kent CT13 1HG

Telephone: 01227 231181
Mobile: 07952 961694
Email: sallyshomefootcare@gmail.com

MARK JONES TREE SURGERY

*A full range of Arboricultural Operations undertaken
including:*

- Planting and re-instatement schemes
 - Remedial Tree Surgery
- Planning Advice (TPO and Conservation Area)
- Work carried out to BS3998:2010, Forestry Safety Council & Arboricultural Association guidelines
- Fully Insured, qualified and NPTC certificated staff

Tel: 01304 614652

Mobile: 07956 994601

email: mark@markjonestreesurgery.co.uk

www.markjonestreesurgery.co.uk

HOW CAN I HELP?

Companionship and Befriending for a relative

If you need support for any of the below (or related), from someone who is honest, trustworthy and reliable with excellent references to support you, I can help.

I have 18 years of professional experience with all ages and difficulties, from birth to adults and have been a foster carer in my previous career (DBS up to date)

**Walking companion*

**Driving, shopping/cooking/housework/errands*

**Support with interests/hobbies and light gardening*

**Dog walking/pet sitting*

**I also have good listening and communication skills to assist individuals with emotional support and life skills*

**Typing for or reading to (Advocacy support)*

I believe in building positive liaisons with parents/guardians to meet the needs of any individual.

Hourly rates are negotiable either through direct payments or privately.

Please call Ann **07793811462**



Fresh from the Farm!

Visit our local farm shop for
Farm Fresh Fruit & Vegetables,
Plants, Shrubs, Composts &
Terracotta Pots.

Quality home grown and
local produce.

Open 7 days a week throughout the year



Ash Road, Sandwich Tel: 01304 617576



Sandwich
Coarse Fishery 

www.sandwichlakes.co.uk
enquiries@sandwichlakes.co.uk

AND WATERSIDE CAFÉ

Seven stunning coarse fishing lakes with large range of specimen fish.
Waterside café serving hot and cold food and snacks.



Sandwich/Ash Road (A257)
CT3 2DA
07936 409912

Tackle shop and rod hire.
Caravan site with spacious grass pitches and hardstanding available.

LITTLEOAK SERVICES LTD

All your gardening needs

Professional Gardening services

Family run business established since 2002



Garden Maintenance	weed killing spray
Hedge reshaping	Scarifying
Small tree pruning	Garden clearance
Garage & shed	Lawn Maintenance
Clearance	Carpet bedding
Planting	Blade Sharpening
Japanese knotweed	Garden machinery
Treatment	maintenance
Many more services provided...	

Visit our website...

www.littleoakservicesltd.com

Contact us for an enquiry/ quote on either
littleoakservices@outlook.com

07849092322

KITCHENS, BEDROOMS, BATHROOMS

Restore, Re-build, Revive

with a simple makeover or a full refurbishment. Always a professional finish tailored to your lifestyle.

David Watson

dedicated local fitter and skilled multi-trader

- ❖ *Free Quotes, Fully Insured*
- ❖ *Fensa registered, DBS checked*
- ❖ **CHECKATRADE approved**

Tel: 01304 351095

Mob: 07828116392

Email: building@handyhomemaintenance.co.uk

For all those jobs you never have time to do

ROBINSON MOTORS

White Mill, Ash Road, Sandwich, Kent CT13 9JB
garage@robinson-motors.co.uk

Telephone: 01304 611719

Car Servicing and Repairs.

MOT Testing.

Car Tuning and Diagnostic Centre.

Tyre Fitting and Puncture Repairs.

Air Conditioning Recharge and Maintenance.

Bosch Car Service Centre.

www.robinson-motors.co.uk



ashpropertycare

Property Maintenance Specialist

Local specialist covering all aspects of property maintenance and repair, from shelving to full bathroom installations and everything inbetween.

GREG HARRIS

01304 813572

07721 000222

**FREE ADVICE,
FREE QUOTES**

Carinya Landscapes

22 years Experience of Creating Beautiful Gardens.

Specialists in All Aspects of Hard Landscaping.

**Patios ~ ponds ~ Block Paving ~ Decking ~ Fencing ~ Terracing
All types of Brickwork ~ No Job too Large or Small ~ Fully Insured
For a Free Estimate Contact Mick Parsons.**

Tel: 01304 813726 Mobile: 07801 694161

R.H. OVENDEN LTD

Waste Recycling & Building Supplies

Sharp Sand, Building Sand, Cement, Ballast, Type1 Sub Base, Shingle, and Recycled Aggregates all available bagged or loose.

FREE TIP for clean concrete and hardcore, other wastes are chargeable. Delivery and Collection Monday to Friday 7-5pm and Saturday by request.

WE NOW DO SKIPS TOO! PLEASE RING FOR A QUOTE.

Pike Rd Ind. Est, Eythorne CT15 4BL Tel: 01304 830840 or 01304 842100

The Haven Spa

@ Nonington

- *Sports & Deep Tissue Massage
- *Swedish, Indian Head & Hot Stone Massage
- *Dermaplaning * Microdermabrasion
- *Radio Frequency Facials * Chemical Peels
- *B12 & Vit C Infusions * Mesotherapy
- *Classic Facials * Non Surgical Lift
- *Ultrasonic Cavitation * LED Therapy
- *Body Wraps & Detox Treatments



www.thehavenspa.org

Wendy 07813 893148 Andy 07508 868161

A Local, Family Run
Business



ELITE BLINDS

MADE TO MEASURE

Blinds • Shutters • Curtains • Motorised • Shaped • Awnings

Specialists with over 20 years experience

01227 720881

info@elite-blinds.com

You can also find us on our socials:   

East Kent Mole Catcher

No Mole - No Fee

Your local mole catcher, based in Ash, covering all local towns and villages.

Offering mole control for your lawns, gardens & paddocks. Public liability insurance.

Call/Text

East Kent Mole Catcher 07876 686543

Email - molecatcherkeith@hotmail.com

molecatcherkeith@hotmail.com





Wright & Shadwell
FINANCIAL MANAGEMENT

*For a free personal and business financial consultation please call
Karen Wright or email info@wrightshadwell.co.uk*

- ✚ Investments & Savings
- ✚ Retirement Planning
- ✚ IHT & Succession Planning
- ✚ Pension Sharing on Divorce
- ✚ Family Protection
- ✚ Overall Holistic Advice

The Heathers
Elmstone, Preston
Nr Canterbury
Kent CT3 1HH
T 01227 722922
F 01227 722905



Tony Wells

**Your local professional
mole catcher**

Cost-effective traditional mole control
No Mole - No Fee • Free Survey • Fully Insured

01304 611090 / 07518 949587

J. Dilnot Smith & Son

Funeral Directors

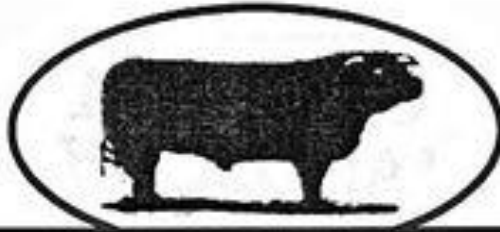
Belle Vue, Beacon Lane, Woodnesborough and
184 Gladstone Road, Walmer, Deal

PERSONAL ATTENTION

Pre-paid funeral Plans

Private Chapels of Rest

Tel: 01304 812300 Day or Night



Chandler & Dunn Ltd

Home of the Goldstone Herd of Sussex Cattle
Goldstone, Ash, Kent CT3 2DY
(Cop Street and Goldstone Junction off the A257)
Prime Beef, Lamb & Pork

Locally produced the natural way

For enquiries and shop opening times please contact us on:

Tel: 01304-814245

Email: butchery@chandleranddunn.co.uk

www.chandleranddunn.com

SOLID ROOFING

ROOFING SPECIALISTS

DARREN CROASDALE

DAZ2105@ICLOUD.COM

WWW.SOLIDROOFING.CO.UK

LODGE LEES FARM HOUSE

DENTON CT4 6NS

07535615535



* Achieve * Create * Know

We have a STRONG history and a STRONG future

The school has served the village of Ash for nearly 300 years, we are proud of our purpose-built school – we offer

- A caring community of teachers and staff
- A modern building
- Spacious learning environments
- Innovative EYFS unit
- * A modern building
- * Extensive grounds
- * Nursery to year 6
- * Breakfast and after school clubs



OFSTED 'Good' school September 2019

'Pupils are positive about their school...work is challenging but rewarding'

'A place where everyone is welcome and cared for'

Contact the school office on 01304 812539 or email office@ashckschool.org

SOUTH EAST ROOFING SERVICES

01304 820724 – 07747746407

OVER 30 YEARS EXPERIENCE

PITCHED & FLAT ROOFS & REPAIRS

WWW.SEROOFINGKENT.CO.UK

SANDWICH CARS

PRIVATE HIRE CARS

01304 617424

Fax: 01304 614157

- AIRPORTS
- CONTRACTS
- ANY DISTANCE
- LONDON & THEATRE TRIPS AVAILABLE



Web: www.sandwichcars.co.uk • Email: sandwichcars@tiscali.co.uk

www.ThanetPlumbing.co.uk

James Braund

**Local, Reliable Gas Engineer and General Plumber
Dripping Taps to Full Heating and Boiler Installs**

Tel: **07876 595029**

Email: james.braund@thanetplumbing.co.uk

Based in Ware, covering all surrounding areas

Always
Checktrade.com
Before you use them



T. PETTMAN

CLOCKMAKER

SPECIALIST IN ANTIQUE CLOCK
RESTORATION AND REPAIR

Daytime
07860 498963

Evening
01843 825050

Nick Hassall Joinery

I make anything from wood.

Internal and external joinery, furniture, windows, stairs,
kitchens, all to suit new and old buildings.

Call me for a free quotation and to see examples of my
work.

Email to nickhassall@gmail.com or call on 07815 179251
(based in Staple).



Wingham Country Market

CT3 1JW

01227 720567

On the A257 between Ash and Wingham

Open 7 days a week

**Family-run farm shop stocking a complete range of
fresh fruit and vegetables**

**Over 800 organic products including fresh vegetables
from our family-run farm**

**Extensive range of vegan and
special-diet foods**

**Competitively-priced ready to burn
logs, coal and Calor gas. Logs
delivered to your door in nets, bulk
bags or tipper loads**

**Well-stocked garden centre,
Christmas trees available in
December**



Website: www.winghamcountrymarket@live.co.uk

Email: winghamcountrymarket@live.co.uk



Domestic and Commercial Cleaning Company

- Weekly / Fortnightly / Monthly Cleans
- All Cleaning Materials and Equipment Provided
- Fully Insured
- Professional, Uniformed Staff Trained to a High Standard

Call us Today for a Top Class Clean

Office: 01304 275086

Mobile: 07542 624402



apexcleanltd@gmail.com

www.apexclean.uk

WESTMARSH VILLAGE HALL

www.WestmarshVillageHall.org.uk

Perfect for parties and events!

All-inclusive hire cost
(hall, kitchen, ample parking
and large outdoor grassed area)



Telephone Alison Stone on 07740 185327 or email
bookings@WestmarshVillageHall.org.uk

Tracey Miles

Chartered Physiotherapists



Overland Farm Clinic
Ash, Canterbury
CT3 2LF



AposHealth[®]
(previously AposTherapy[®])

CERTIFIED PROVIDER

FREE PARKING
DISABLED ACCESS

BE THE BEST YOU CAN BE



Physiotherapy for
Joint, Spinal & Muscle Pain
Women's Health Specialist
Men's Health Specialist
Pre & Post Baby Checks
Pilates - One to One and Classes
AposHealth[®] for Knee & Hip Pain



Find us on
Facebook

To book an appointment:

Call: 01304 813408

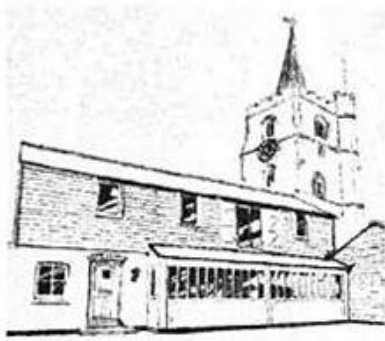
email: admin@traceymilesphysio.com

Website: <https://www.traceymilesphysio.com/>

Physiotherapy

Treating the cause not just the symptoms

ASH PHYSIOTHERAPY & SPORTS INJURY CLINIC



Chartered Physiotherapists with a special interest in...

Acupuncture
Back & Neck Pain
Chronic Pain
Dizziness & Balance Disorders
Headaches
Hypermobility
Joint Problems
Sports Injuries & Rehabilitation

For a consultation please:

Phone: 01304 813596

Email: ashphysio@uwclub.net

www.ashphysiotherapy.co.uk

**THE OLD COACH HOUSE
58 THE STREET
ASH CT3 2EW**



**HUGH COOKE LTD
BUILDERS ~ ASH**

Est. 1991

Specialising in:

Traditional Brickwork

•
Plastering

•
Building

•
Roofing

•
Extensions

•
Renovations



**City & Guilds
Qualified**

**Rose Cottage, Cop Street, Ash,
Canterbury, Kent CT3 2DL**

**t. 01304 813791
m. 07970 601926**



DOMESTIC CLEANING SERVICES

*Super Cleaning! Super Courtesy!
Super Efficiency!*

**For regular or one-off cleaning in
your home, office or church**

Tel: 01227 277033

Quality Cleaning with Care

www.supermaids.co.uk

info@supermaids.co.uk

Half Price Carpet Cleaning

My name is Perry, and my wife Marina and I run ACS Carpet Cleaning, a local family run business established for 30 years, with 1000's of happy clients.



**We would love to welcome
you as a valued client too.
That's why I created my
extremely popular**

HALF PRICE INTRODUCTORY OFFER.

Free Quote

I'll visit you and see what needs to be done. I'll carry out a few quick tests and leave you with a written quote that includes my half price introductory offer.

You were polite and friendly and your service was excellent. My carpets look a damn sight better. I'm very pleased. Mrs Simmons, Ash.

To book a quote call 01304 381165



CROCODILE LANDSCAPES

**DOES YOUR GARDEN OR
HOUSE NEED ATTENTION?**

We offer for your garden:

COMPLETE LAYOUTS FROM DESIGN TO COMPLETION
RE-DESIGNING OLD LAYOUTS
REGULAR MAINTENANCE - FORTNIGHTLY OR MONTHLY
PLANTING SCHEMES - LARGE OR SMALL
TREE WORK - WATER GARDENS - PATIOS - BRICKWORK
GENERAL TIDY-UPS ETC

For your home:

DRIVE - SHED AND GARAGE BASES - FENCING
ROOF - CHIMNEY AND GUTTERING REPAIRS
PAINTING AND DECORATING
BLOCK PAVING - EXTENTIONS - SWIMMING POOLS
SPECIALISED OLD BUILDING RENOVATIONS AND CONVERSIONS
ALL GENERAL BUILDING REPAIRS

NO JOB TOO SMALL

**For FREE ESTIMATES and
PROMPT PROFESSIONAL SERVICE**

ASH (01304) 812256 (Evenings)

**WE TAKE THE BITE OUT
OF YOUR PROJECTS**

Established 1981



OIL BOILER SERVICE

www.oilboilerskent.co.uk

Friendly Family Business
Prompt Professional Service
Sensible Prices
Fully Qualified & Insured



For Routine Service or Emergency Breakdown Contact

P & V QUENBY LTD
01227 760428



Jewellery you'll love, service you'll appreciate

Kim Wood Jewellers

*Antique & Modern Jewellery
Silverware ~ Watches and Clocks
Secondhand Items Purchased
Pawnbroking Services Available
Valuations ~ Trade Welcome*

Tel/Fax: 01304 617700

8B King Street Sandwich Kent CT13 9BY

Workshop on the premises

Buy online at

www.jewellersinkent.com

www.facebook.com/kimwoodjewellers



Find us on
Facebook



**Gentle
&
Effective**

Sarah Hayward GCC, MCA, C of C McTimoney Chiropractor

- Back, Neck & Shoulder Pain
- Pain & Stiffness - Joints & Bones
- Migraine
- Sports Injury
- Pregnancy
- Muscular aches & pains

Tel: **07778703373** 53 Chequer Lane, Ash (Also based in Canterbury)

www.sarah-hayward.co.uk



GARY MOSS

CHIMNEY SWEEP

CALL 01304 271053

CALL 07928230007

ICS Registered Member



St Faith's
PREP SCHOOL

**A happy and high achieving
school where every day
makes a difference**



Call **01304 813409** or email info@stfaithsprep.com
to request further information. website: www.stfaithsprep.com



Ideal Venue for all your Events and Children's Parties

Available for Hire -

Hall with Stage, PA and Hearing Loop

Meeting Room with Tea Bar

Fully Equipped Kitchen

Disabled Access

Bookings - 01304 369314

www.ashvillagehall.org.uk

f facebook.com/ashvillagehall

Library at Ash Village Hall

During opening hours tel: 01304 812440

Monday	11.30 - 1300 & 14.00 - 17.00
Tuesday	09.30 - 13.00
Wednesday	09.30 - 14.00
Thursday	Closed
Friday	11.30 - 17.00
Saturday	09.00 - 14.00
Sunday	Closed

Books - Information

Free Internet Access

www.kent.gov.uk/libs



River Chimney Sweep

Insurance approved certificate issued with every sweep

Other services include:

Stove Installation: Chimney liners

Bird cowl: Chimney Repointing

Stove servicing & repairs

Call Marcus Wright

Tel: 01304 761081

Mob: 07971 699220

www.riverchimneysweep.co.uk

Registered OFTEC Stove Installer





35
years

DOMESTIC CLEANING SERVICES

*Super Cleaning! Super Courtesy!
Super Efficiency!*

For regular or one-off cleaning in
your home, office or church

Tel: 01227 277033

Quality Cleaning with Care

www.supermaids.co.uk

info@supermaids.co.uk

GUILTON FORGE GARAGE

(Ash) Ltd

Tel: 01304812630

email: guiltonforge@gmail.com

MOT Testing by appointment

Vehicle diagnostic service

Air conditioning service & repair

Service & repairs to all makes/ages of vehicle

No work undertaken without prior approval

Pick up & delivery service

www.guiltonforge.co.uk

RMI Affiliated

Sandwich Coarse Fishery



& WATERSIDE CAFÉ

SEVEN STUNNING COARSE FISHING LAKES WITH LARGE RANGE OF SPECIMEN FISH

TACKLE SHOP AND ROD HIRE

WATERSIDE CAFÉ SERVING HOT AND COLD FOOD AND SNACKS

CARAVAN SITE WITH SPACIOUS GRASS PITCHES & HARD STANDING AVAILABLE

☎ 07936 409912

📍 Sandwich Ash Road (A257) CT3 2DA

🌐 www.sandwichlakes.co.uk

enquiries@sandwichlakes.co.uk



Premier

Free
ATM

Amazing value

Poparound – Ash

The right price food store for all your local needs,
Including Pay Zone & Pay Point services

Groceries; off-licence; bakery; newspapers and magazines; hot food and drinks; dry-cleaning; health and national lottery; fax and copy services; home delivery; stationary; and more

Open 6.30am-10pm daily

Shop: 01304 812251

Evri delivery

31 The Street, Ash, Canterbury

Canterbury Pottery

(Opposite the Cathedral. Est. 1963)

Hand made stoneware pottery for the home & garden,
all in our own sumptuous glazes.

Special commissions undertaken. Free delivery to Ash area.

Tel: 01227 452608. Visit our Studio Showrooms or

www.canterburypottery.com